

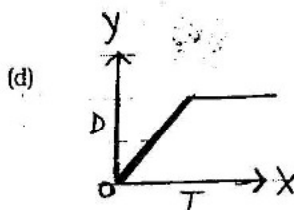
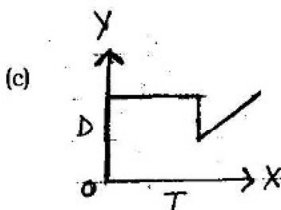
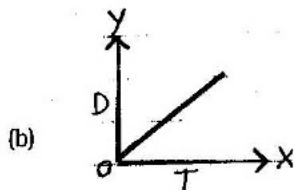
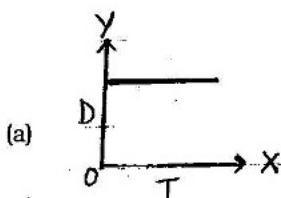
Time : 30 minutes

M.M.: 15

General Instructions :

1. Attempt all questions.
2. There are 15 multiple choice questions in total. Only one of the options in every question is correct. Put a (✓) against the correct option.
3. Each question carries 1 mark.
4. Do not use white fluid on these sheets.
5. Use only pen to mark the answers.

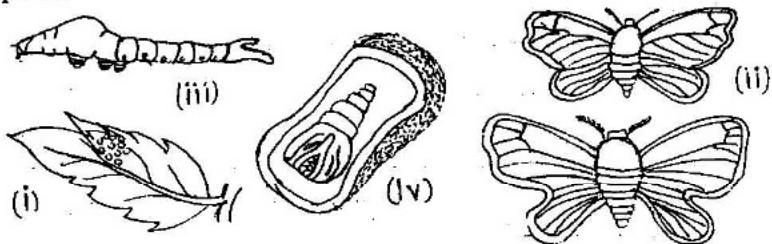
- Q1. The device which is used for measuring time intervals in sports activities is called
- (a) wrist watch (b) stop watch
(c) alarm clock (d) quartz watch
- Q2. The mirror whose inner surface acts as a reflecting surface is
- (a) plane (b) convex
(c) concave (d) both (b) and (c)
- Q3. If the time taken to complete 15 oscillations is 120 seconds, then the time period of the pendulum is
- (a) 8 seconds (b) 15 seconds
(c) 10 seconds (d) 12 seconds
- Q4. The device which have seven different colours but when rotated appears to be white is
- (a) prism (b) spectrum disc
(c) dispersion disc (d) Newton's disc
- Q5. Which of the following graphs represents a body at rest?



- Q6. Given below is a sequence of steps in the processing of wool. Choose the correct shearing, p , sorting, q , dyeing, r
- (a) p - scouring, q - making yarn, r - removing burr
 (b) p - removing burr, q - making yarn, r - scouring
 (c) p - scouring, q - removing burr, r - making yarn
 (d) p - making yarn, q - scouring, r - removing burr

- Q7. The eggs of female silk moth are warmed to a suitable temperature for
- (a) larvae to hatch from pupa (b) larvae to hatch from eggs
 (c) pupa to hatch from cocoon (d) pupa to hatch from eggs

- Q8. Given below is a sequence of events in the life cycle of silk moth. Choose the correct sequence

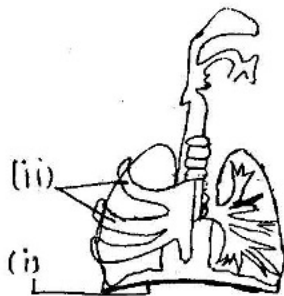


- (a) (ii), (i), (iii), (iv) (b) (ii), (iii), (i), (iv)
 (c) (iv), (i), (ii), (iii) (d) (iii), (ii), (i), (iv)
- Q9. The most common silk moth is the mulberry silk moth. The characteristics of the silk fibres obtained from its cocoon are -

- (a) softness, lustre, elasticity (b) lustre, hardness, elasticity
 (c) hardness, dullness, elasticity (d) softness, brittle, dullness
- Q10. A pile of cocoons is used for obtaining silk fibres. The reeling of silk is done after
- (a) hammering cocoon (b) piercing cocoon
 (c) washing cocoon with cold water (d) boiling cocoon in hot water

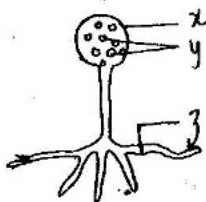
- Q11. In the figure given below the changes that take place in (i) and (ii) during exhalation are -

- (a) (i) - moves downwards, (ii) - move outward
 (b) (i) - moves upwards, (ii) - move inward
 (c) (i) - moves upwards, (ii) - move outward
 (d) (i) - moves downwards, (ii) - move inward

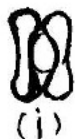


Q12. In the given figure x, y and z represent :

- (a) x - sporangium, y - spores, z - hypha
- (b) x - hypha, y - spores, z - sporangium
- (c) x - spores, y - sporangium, z - hypha
- (d) x - spores, y - hypha, z - sporangium



Q13. Sangeeta prepared a slide of leaf peel to study stomata and observed it under a microscope. The correct observation is



(i)



(ii)



(iii)



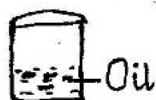
(iv)

- (a) (i)
- (b) (ii)
- (c) (iii)
- (d) (iv)

Q14. While determining the nature of the gas released during exhalation the teacher suggested that the apparatus should be made air tight. This is done by using

- (a) paper
- (b) sponge
- (c) cork
- (d) cotton

Q15. Rajan added iodine solution in the beakers A, B, C and D. The colour will change blue black in beaker -



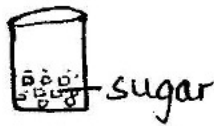
A



B



C



D

- (a) A
- (b) B
- (c) C
- (d) D